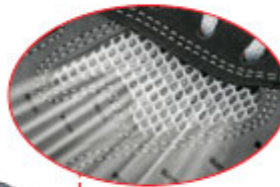


Wide side aerator for extra breathability



METAL FREE 100%

Airtoe COMPOSITE

Save & Flex

BREZZA S1P SRC

CODE: 64-RR20196

UPPER

Soft suede leather with Airnet panels

LINING

WingTex air tunnel textile lining material

LINING

AirToe Composite perforated safety toe cap with breathable membrane

PIERCE-RESISTANCE

Save & Flex PLUS



FOOTBED

Ergo Dry, PE footbed, antifungal, good shock absorption

SOLE

Soft P.U. comfort inner layer

OUTER SOLE

Antislip, antistatic and hard wearing P.U.

LAST

Natural Confort 11 Mondopoint

SIZE

from 35 to 48

UNI EN 20345:2011 CE

Technologies

